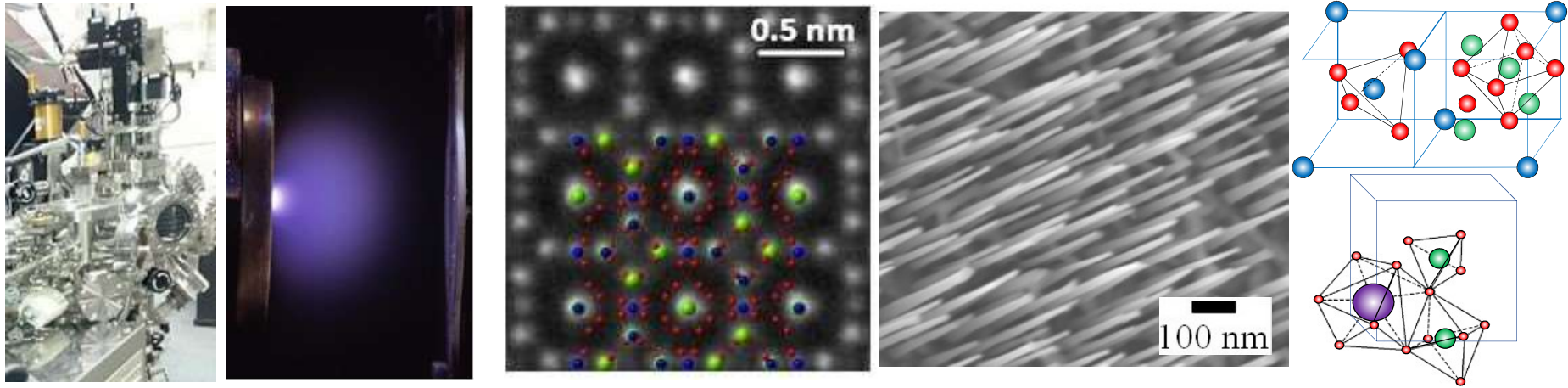


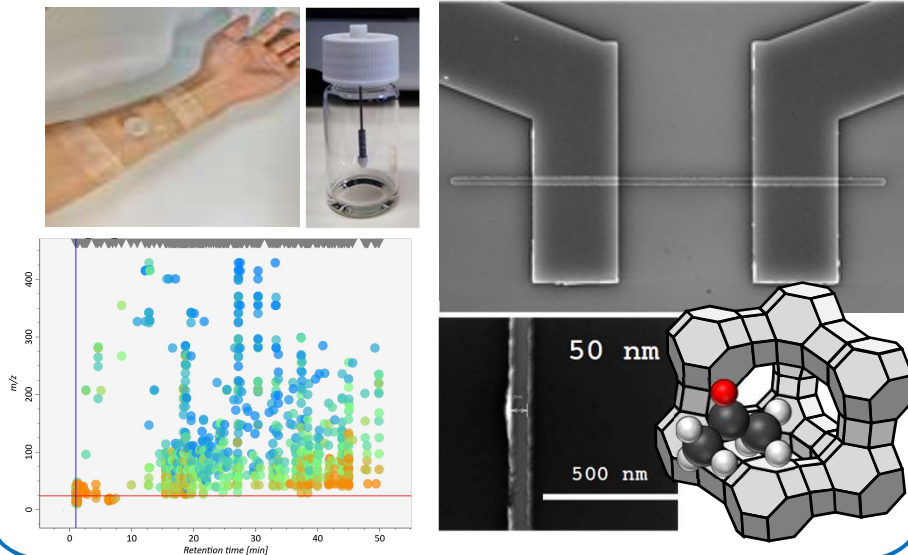
Creation of novel physical functions by using oxide epitaxial growth technology toward medical engineering applications

Non-equilibrium single crystal thin film/nanostructure growth technique



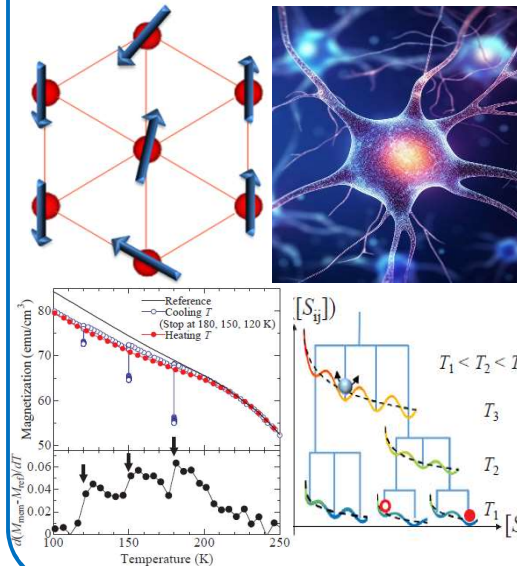
e-nose toward biomedical application

Search for gas biomarkers Ultra-sensitive gas sensor



Brain-type memory/neuromorphic device

Spin glass



Magnon, spin wave : magnetic sensor

